

DCTools 1.12.5

Last Updated	17 September 2012
Applicable products	DCTools
Audience	Eaton DC Channel Partners and Integrators
Related documents	
For more information	Contact: CustomerServiceNZ@eaton.com , or Simon Sloane, Product Manager. SimonSloane@eaton.com

Description

DCTools 1.12.5 is a bug fix release of DCTools.

This fixes a bug where DCTools did not show the Digital Output table on an SC200 V4.

Change History

- Version 1.12.5
 - Fixed a bug where DCTools did not show the Digital Output table on an SC200 V4
- Version 12.4
 - Added support for SC200 V4.04
- Version 1.12.3
 - Added support for SC200 version 4.02
- Version 1.12.1
 - Added support for SM45/SM65 version 7.00
 - Added support for SM45-100C
- Version 1.12.0
 - Auto update feature added
 - Chinese translations updated
 - Added support for SC200 version 3.60

Automatic update notification

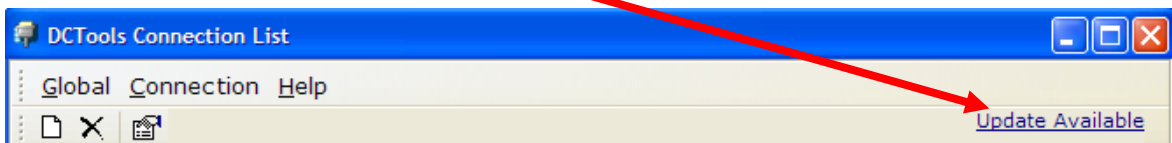
DCTools can automatically check for updates and download the update for the user.

This feature requires access to the web.

To check for updates:

Option A.

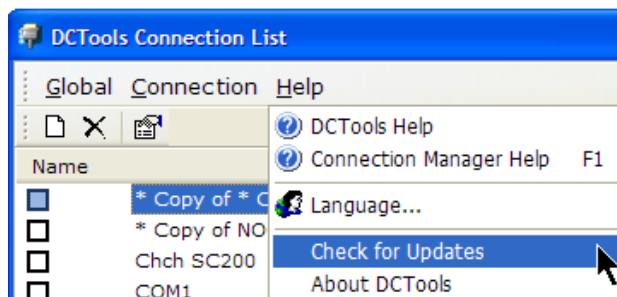
1. Open DCTools Connection List.
2. If an update is available, it will be shown here.



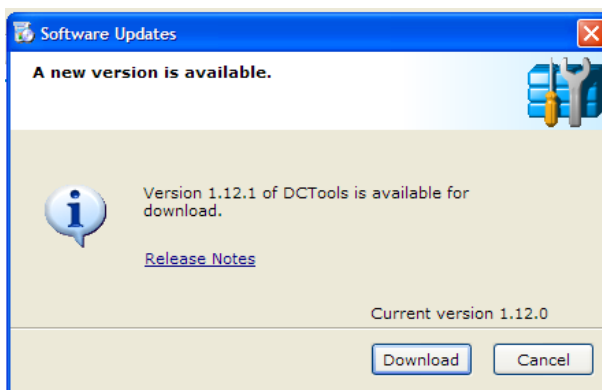
3. Click on *Update Available*.
4. The update will be downloaded.
5. Click on *Update Ready* to install the update.

Option B

1. Open DCTools Connection List.
2. Select *Help > Check for Updates*.



3. Click *Download*.



downloaded, click *Install*.

4. After the update has been

Products supported

DCTools 1.12.5 supports the following products:

- SC200 System Controller Version 1.20, 2.61 and earlier, 3.04 to 3.13, 4.02
- SC100 System Controller Version to version 2.09
- SM45/SM65 Supervisory Modules Version 7.00 and earlier
- SM40/SM60 Supervisory Modules Version 4.08 and earlier
- SM50 Supervisory Module Version 5.05 and earlier
- SM30 Supervisory Module Version 2.10 and earlier
- CellSure battery Controller (CBC) Version 1.05 and earlier
- SM20 Supervisory Module Version 2.19 and earlier
- NSM35 Supervisory Module Version 1.1.5 and earlier
- SM45-00C Supervisory Module Version 1.06 and earlier